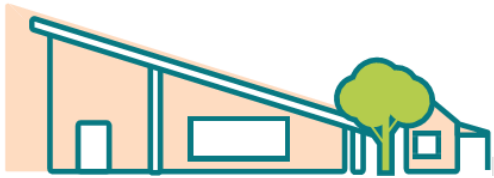




# Moana

## KINDERGARTEN



2024 annual report to the Community

## Moana Kindergarten

Moana Kindergarten number: 3690

Partnership: River Hub



Preschool director:

Jaci Lewis

Date of endorsement:

11/02/2025



Government  
of South Australia  
Department for Education

## Context Statement

Moana Kindergarten is a Department for Education stand-alone preschool located on the mid-coast, south of Adelaide. The site offers 4 terms of preschool for children before they enter primary school, and for ATSI children from three years of age. Over previous years, we have continued to increase attendance at our site due to increased housing developments in our area. We back on to our local primary school, Moana Primary school, enabling a strong connection between sites, which supports us to access their facilities including larger play spaces, sports hall and library. We offer sessional preschool across the week, through two groups. The Rosella Group attends Monday and Tuesday, and the Turtle Group attends Thursday and Friday, from 8:30am-3:00pm, accessing 13HPW. Remaining hours for both groups are offered on alternate Wednesdays, 8:30am- 1:30pm, throughout the term. There are no Wednesday sessions on the last two weeks of each term due to longer operating hours on previous Wednesdays. The site offers a program that supports well-being and builds upon children's dispositions for learning, and literacy and numeracy development through periods of uninterrupted play and intentional teaching practice. Children have opportunities to participate in concurrent indoor and outdoor learning spaces with a focus on learning in and with nature. We have extended and sustained our connection with our community through the development of our Beach Kindy program, which we engage in annually over terms 2 and 3, further developing awareness and impact on the environment and nature, connecting to the land, and sustainability practices. We work closely with Department for Education Support Services staff to meet the needs of each child. This is to ensure access to services and specific programs, connecting with providers such as Speech Pathologist, Psychology and Behaviour support services developing specific learning programs for children and their families. On site we have a full-time director (1.0FTE), three early childhood teachers (0.8, 0.5, 0.2FTE) working within their sessional groups and three early childhood workers (ECWs) working across both sessional groups to provide consistency and continuity within our site. The staff reflect, plan, implement and assess using the Early Years Learning Framework, Indicators of Preschool Numeracy and Literacy (DfE) and Keeping Safe: Child Protection Curriculum to report upon children learning throughout the year, through multiple mediums. We engage in the steps of the Preschool Quality Improvement Plans over an annual timetable, and the National Quality Standards exceeding themes are embedded within our sites practice and pedagogy, which are the foundations of our fortnightly sessional reflection meetings, as well as whole site meetings and professional development. Overall, this ensures we are providing a safe and high-quality learning environment where learning and care can flourish through a holistic approach.

In 2024, our focus was on enhancing children's ability to regulate their emotions and support their growing independence as engaged learners. As a site, we reflected on our Learning Environment, drawing on the knowledge gained from our 2023 Lisa Burman – Pedagogical Growth Consultancy training. We continued to critically reflect our curriculum planning (termly, weekly and fortnightly) as well as our intentional teaching practices around daily experiences and routine to strengthen children's ability to self regulate.

Information about Moana Kindergarten is available on the centres website, as well as the Australian Childrens Education and Care Quality Authority (ACECQA) website.

# Governing Council Report

As we come closer to the end of the term, I would like to thank our council members, staff, and families for their continued dedication to making our kindergarten a thriving and welcoming community for our children.

We are thrilled to report on the success of recent fundraising efforts:

- Winter Raffle: This initiative raised a total of \$827. These funds will directly support sensory resources for the kindy.
- Tea Towel Fundraiser: \$560
- Wine Fundraise- is underway at the moment. Total TBA at a later date.

Your ongoing support in fundraising efforts helps us continue to create enriching experiences for our children.

Sammy's Baby Shower: We recently celebrated a beautiful milestone for one of our much-loved staff members, Sammy, who had her baby boy Hudson on October 31st.

- Turtle group did small baby shower for Sammy. A big thank you to everyone who contributed to making it special. From the thoughtful gifts, games, and flowers made Sammy feel special.

- We wish Sammy all the best as she embarks on this exciting new chapter in her life.

Community Engagement: A special thank you to families who continue to participate in our events and activities. Your presence and involvement make our community stronger and provide wonderful opportunities for the children to feel connected.

Looking Ahead: As we plan the remainder of the term, our focus remains on fostering a supportive and vibrant environment for the children. We would like to encourage any new families to get involved and join the governing council.

Thank you again for your enthusiasm and commitment. Together, we're building a wonderful foundation for our little learners.

Warm regards,

Stacey Richard

Chair, Governing Council

## Preschool Attendance

	Term 1	Term 2	Term 3	Term 4
2021 centre	89.9%	88.9%	96.9%	92.4%
2022 centre	85.8%	85.7%	77.3%	76.4%
2023 centre	91.5%	86.6%	86.2%	78.8%
2024 centre	87.8%		81.9%	

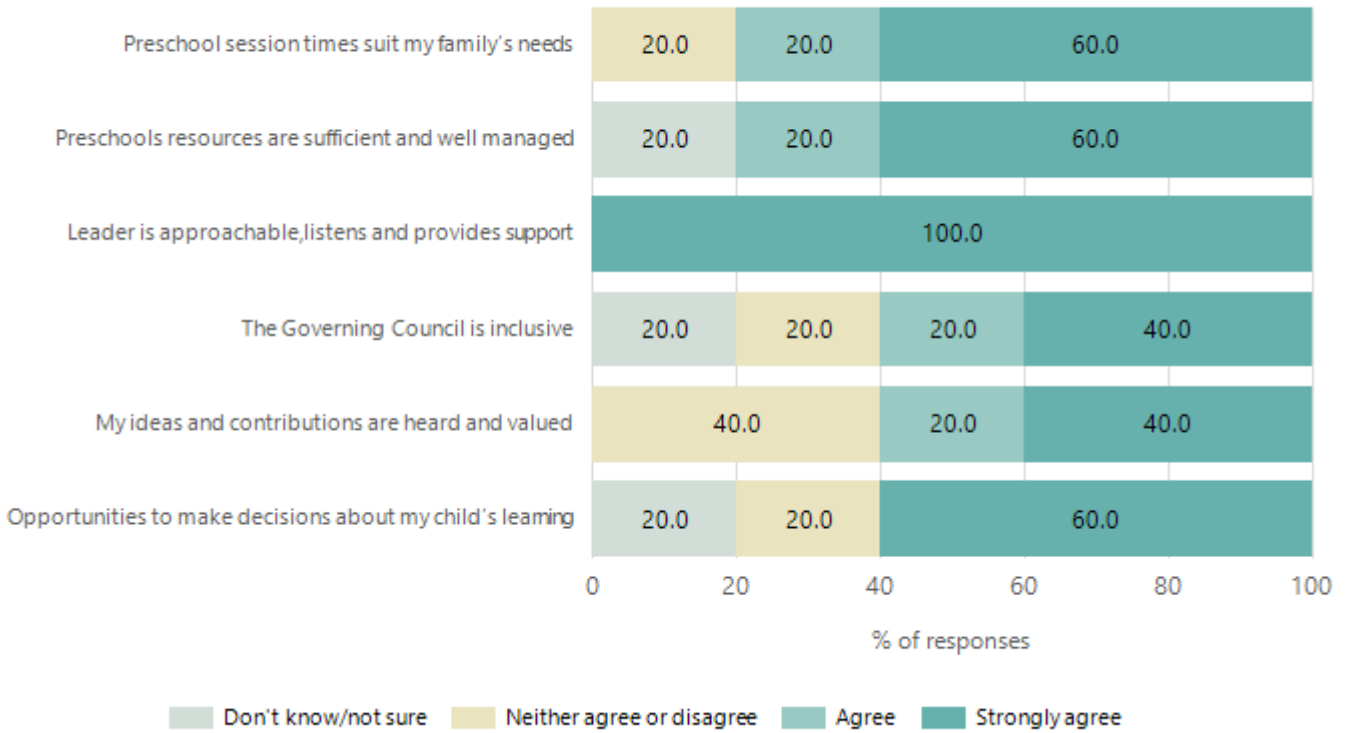
Based on attendances recorded in the two-week reference period each term. Data for eligible enrolments as described in the department's Enrolment policy. Attendance rates may differ to previous reporting with the transfer from calculations based on deemed attendance to actual attendance using booked hours divided by attended hours. Data Source: Department for Education Attendance Data, Semester 1 Report 2024. A blank cell indicates there were no students enrolled.

## Attendance Comment

In South Australia, preschool attendance is not compulsory, but it is strongly encouraged. Preschool gives children the best opportunity to develop skills, which prepare them for school. These benefits include establishing positive routines and habits, friendships and connections as well as developing communication, problem-solving and creative skills. All children are entitled to access a preschool program over 4 terms the year before they start school.

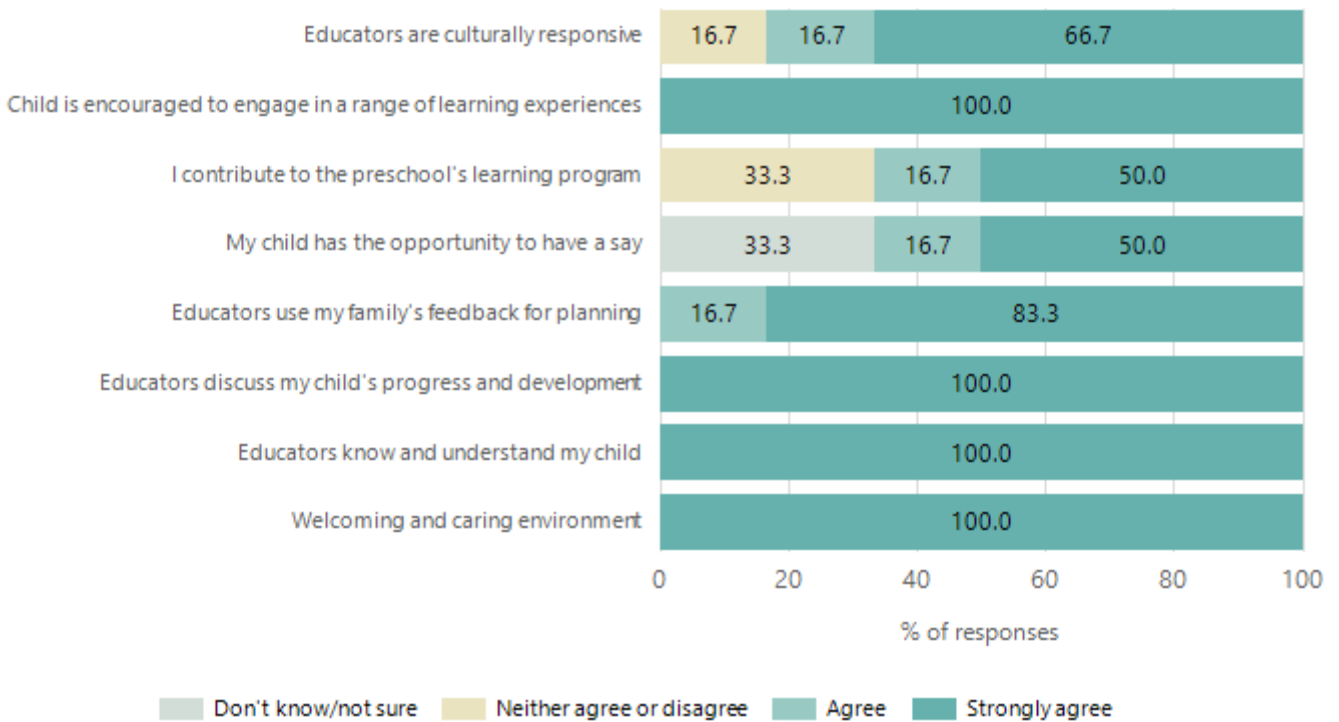
# Preschool Family Opinion Survey

## Governance, Leadership and Management



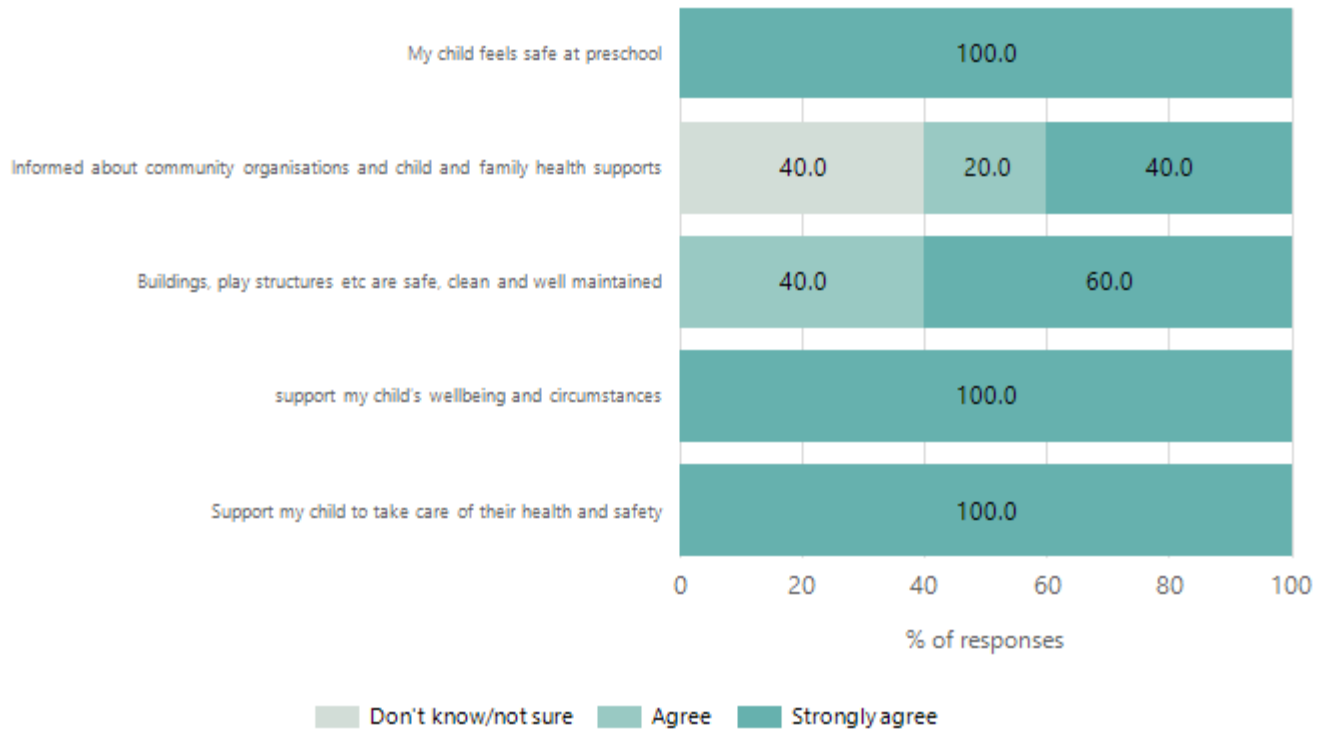
Data Source: 2024 Department for Education Preschool Family Opinions Survey, Term 3 2024.

## Quality of Teaching and Learning



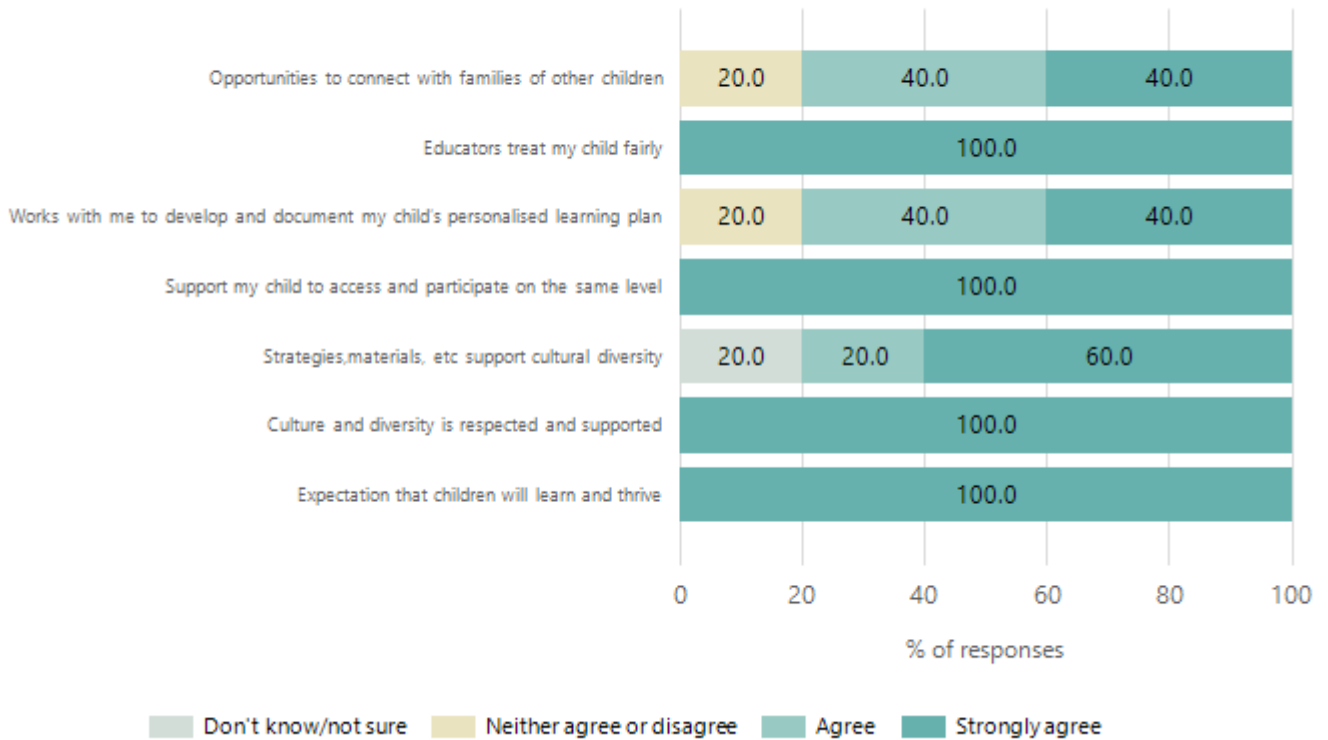
Data Source: 2024 Department for Education Preschool Family Opinions Survey, Term 3 2024.

## Safety, Health and Wellbeing



Data Source: 2024 Department for Education Preschool Family Opinions Survey, Term 3 2024.

## Support and Inclusion



Data Source: 2024 Department for Education Preschool Family Opinions Survey, Term 3 2024.

# Destination Schools

Feeder Schools (Site number - Name)	2022	2023	2024
0251 - McLaren Vale Primary School		4.4%	8.3%
1071 - Moana Primary School	74.1%	69.6%	55.6%
9756 - All Saints Catholic Primary School	12.1%	10.1%	16.7%
9999 - Unknown	6.9%	7.3%	9.7%

Note: The data is collected in term 3. It does not reflect actual schools enrolled in by existing preschool children. A blank cell indicates there was no data for students enrolled.

Data Source: Department for Education Destination Data Report, 2024.

# Highest Qualifications held by the teaching workforce and workforce composition

All teachers at this school are qualified and registered with the SA Teachers Registration Board.

Qualification Level	Number of Qualifications
Bachelor's degrees or Diplomas	3
Postgraduate Qualifications	1

Data Source: Data extracted from Mandatory Workforce Information Collections as on the last pay date of June 2024. As self-reported by staff in the system.

Please note: Data includes staff who are Actively employed and on extended paid leave. Please note only the highest qualification of the Teaching staff is reported. Excludes any number of other certifications earned.

## Workforce composition including indigenous staff

	Teaching Staff		Non-Teaching Staff	
	Indigenous	Non-Indigenous	Indigenous	Non-Indigenous
Full-Time Equivalents	0.0	2.7	0.0	1.7
Persons	0.0	4.0	0.0	3.0

Data Source: Data extracted from Mandatory Workforce Information Collection as on the last pay date of June 2024.

Please note: Data includes staff who are actively employed and on extended paid leave. "Indigenous category" is self-reported by staff in the system.

## Financial Statement

Funding Source	Amount
Grants: State	\$564245.22
Grants: Commonwealth	\$587
Parent Contributions	\$29160
Fund Raising	\$2930.30
Other	\$2949.13

Data Source: School supplied data.